

Early Education and Child Development

<https://www.era-eccd-sig.org/>



Inside This Issue

**Pg. 2: Chair's Message
Continued**

**Pg. 3: EE/CD Business
Meeting, Travel Grants**

Pg. 4-5: Awards

**Pg. 6-7: Proposal
Submissions Summary**

**Pg. 8: Budget and
Membership Report**

**Pg. 9: EE/CD Board
Members**

Chair's Message

Myae Han

Dear Early Education and Child Development (EE/CD) SIG members,

I hope you and your families are well, healthy, and getting adjusted to a new-normal life. The past years have been challenging for our SIG as well as for many others. However, we overcame the challenges and turned them into a success. Our last business meeting was a huge success even though AERA's platform failed. We quickly moved our meeting to Zoom and continued our business meeting and mentoring sessions for members at a different stage of their career. Our board members worked very hard to prepare the mentoring sessions and their efforts have paid off. I heard that some groups have continued to meet afterwards and formed a writing group. We also hosted our first webinar on Anti Bias education in ECE.

This year, we are not allowed to have a separate zoom meeting for the business meeting because AERA created a platform using the Zoom. Our virtual business meeting is scheduled on **Sunday April 24th, 6:00 PM (Pacific time) [9:00 PM (Eastern)]**. Please join us our virtual business meeting via AERA platform. We do realize that this is a very late time for many virtual attendees on a Sunday night. Therefore, we decided to have a relatively short business meeting and plan to do mentoring sessions later in the year. We are planning to have a dissertation grant session. Stay tuned!

Spring is a transition time for the EECD SIG executive board. I would like to recognize our continuing board members, new and outgoing board members.

Continuing board members will be **Melissa Sherfinski** (transitioning from Chair-elect to acting Chair), **Jennifer Baumgartner** (transitioning from Secretary to newly elected Chair-Elect), **Alison Hooper** (transitioning from Junior member-at-large to Secretary/Treasurer), **X. Christine Wang** (continuing Senior member-at-large, website manager), **Bethany Wilinski** (continuing Junior member-at-large), **Sohyun Meacham** (Newsletter editor), **Katerine Delaney** (continuing co-program chair), **Sophia Han** (continuing co-program chair), **Amber Brown** (listserv manager). Thank you for your service during the difficult time and continuing your commitment to the EECD board.

(chair's message continued.)

We have new board members joining us. Congratulations to **Anamarie Whitaker** (new Junior member-at-large), **Ji Young Choi** (new Senior member-at-large), **Valkessha Marshall** (new graduate students representative), **Julia Atiles** (new co-program chair).

Welcome on board. We are eager to work with new faces and new ideas!

I would like to express my special thanks to our outgoing board members.

Marty Lash (past chair) for serving many years on the board in various roles and always welcoming our members with her kind smile and making us realize that we're the community!

Tomoko Wakabayashi (Senior member-at-large) for her contribution to chairing an early career research award and creating a successful election pool as a Senior member-at-large.

Kate McCormick (co-program chair) for serving on three years as a program committee chair organizing numerous proposal reviews and organizing the sessions for the conference.

Mila Costa (graduate student representative) for being an advocate of our SIG and let us hear the voice of graduate students.

Our board has been busy with many essential tasks to support the Early Childhood community during the year of 2021-2022. Here are some highlights I like to share, and you can find more information in this newsletter.

- We continued COVID emergency fund to support students and early career scholars to attend the AERA conference. We supported 15 graduate students and early career members with a SIG- sponsored travel grant this year.
- We presented the Distinguished Contribution to Research Award.
- We presented the Early Career Research Scholar Award.
- We presented the Outstanding Dissertation Award.
- Our election was successfully carried out with many qualifying candidates' pools, and we were able to secure all our competitive positions.

Please find the names of awardees in this newsletter. The award ceremony will happen during the virtual business meeting. Congratulations again to the awardees!

For those of you attending the AERA conference virtually, I hope that you can take full advantage of the virtual conference. For those of you attending place-based meetings in San Diego, I hope to see your face and converse. Please feel free to email me at myaehan@udel.edu, to arrange an informal meeting if you have any questions about our SIG. I will be available to meet and talk with you about our SIG and the board during the conference.

It has been a privilege and humbling experience for me to have the honor of chairing EECD SIG, a wonderful community. I will be finishing my term as a chair and moving to a past chair role advising the board. Please join the wonderful community within AERA.

Here's my last word as a chair. Don't forget to have a playful time during your work. Play and work are mutually supportive. Work-life balance is the key to a happy life. Let's remember the saying, '*We don't play because we get old, we get old because we stop playing.* By George Bernard Shaw'

Myae Han, Chair
Professor
University of Delaware

“
We don't play because we get old,
we get old because we stop playing.”
George Bernard Shaw

EECD **VIRTUAL** BUSINESS MEETING

DATE : **Sunday, April 24th, 6PM (Pacific Time)**

Business Meeting Agenda

- **Meet our board members**
- **Membership report**
- **Budget report**
- **Program report**
- **Award ceremony:**
 - SIG-sponsored travel award
 - Early career scholars
 - Graduate students
 - Outstanding dissertation award
 - Early career research award
 - Distinguished contribution to EECD award



Graduate Student and Early Career SIG-Sponsored Travel Grants

Alison Hooper

The AERA EE/CD SIG was pleased to support 15 EE/CD SIG graduate students and early career members with SIG-sponsored travel grants. These grants covered the cost of place-based or virtual conference registration.

Early career recipients, listed in alphabetical order, were Kathryn Chapman, University of Kentucky; Michelle DeJohnette, San Diego State University; Paul Kienlen, Texas A&M-San Antonio; Jillian Lauer, New York University; Michael Little, North Carolina State University; Soojin Park, University of Washington; Robin Sayers, University of Maryland; Katie Sloan, Oakland University; and Cynthia Wiltshire, University of Texas at El Paso.

Graduate student recipients were Melissa Bishop, Oakland University; Shayna Cook, American University; Emily Mak, University of California, Davis; Annette Pic, University of Delaware; Zhiling Shea, University of California, Irvine; and Wendy Wei, Harvard Graduate School of Education.

Congratulations to all of the travel grant recipients!

DISTINGUISHED CONTRIBUTIONS TO RESEARCH AWARD

Martha Lash
Past Chair

The Early Education/Child Development SIG's Distinguished Contribution to Research Award recognizes an individual who has contributed nationally and internationally to the field of early education/child development as well as to the EE/CD SIG. The award is given annually and selected by a committee of previous chairs of the SIG. This year the EE/CD SIG is pleased to award this honor posthumously to **Dr. Rebecca Kantor**.

Dr. Kantor was serving as the Dean of Colorado University Denver at the time of her passing (4/22/21) and had been at the Ohio State University as Professor previously. Please join us at the meeting as close colleagues Dr. David Fernie and Dr. Lori Ryan share highlights and honors of her career in the early childhood/child development field.





EARLY CAREER AWARD

X. Christine Wang

The Selection Committee is excited to announce our 2022 Early Career Awardee, **Dr. Elizabeth Hadley**. Dr. Hadley is an Assistant Professor of Literacy Studies at the University of South Florida. Since obtaining her Ph.D. from Vanderbilt University in 2017, Professor Hadley is quickly establishing herself as an important contributor to the development of theory and the promotion of effective classroom instructional practice in the field of reading.

Dr. Hadley has an impressive publication track record including twelve empirical articles in top peer-reviewed journals, one book chapter, and three additional papers under review. An examination of Dr. Hadley's publications reveals three outstanding features of her early career: (1) systematic pursuit of a research agenda that focuses on new and rigorous questions in children's early oral language development; (2) relevant and welcomed contributions to multiple fields such as early childhood education, applied psychology, child language, and reading education; and (3) meaningful attention to varied readership including researchers, administrators, and practitioners.

According to her nominators, Professors David K Dickinson and Molly F. Collins at Vanderbilt University, Dr. Hadley is "a stellar thinker and conceptualizer," and "she epitomizes the early research career scholar in our field." Please join us in congratulating Dr. Hadley.

Thank you to the selection committee members: Dr. X. Christine Wang at SUNY Buffalo and Dr. Nancy File at UW-Milwaukee, who volunteered their time to ensure a fair, robust, and timely selection of our awardee from a group of promising young scholars.

OUTSTANDING DISSERTATION AWARD

Bethany Wilinski

The Outstanding Dissertation Award Committee was pleased to receive many nominations for high-quality dissertations focused on important issues within the fields of early childhood education and child development. From these strong nominations, the award committee selected **Dr. Kevin Wong** as the winner of the 2022 Outstanding Dissertation Award for his dissertation "The Promise of Educational Media for Dual-Language Learners' L1 and L2 Vocabulary Development."

Dr. Wong earned his Ph.D. in Teaching and Learning from New York University and is currently Assistant Professor and Chair of the MA in TESOL program at Pepperdine University in the Graduate School of Education and Psychology. Dr. Wong's research examines how technology can best support dual language learners (DLLs) in learning a new language while also maintaining their heritage language, and his dissertation focused on understanding how educational media can be optimized for the early bilingual development of DLLs.

Congratulations, Dr. Wong, and thank you to the EE/CD SIG members who served on the selection committee: Erica Barnes, Michelle Bauml, Kathryn Boonstra, Kaitlin Northey, and Kristin Whyte.



Program Committee Report: 2022 Proposal Submissions Summary

Kate McCormick, Kate Delaney, Sophia Han
Program Co-Chairs

Total Submissions (N=163)

We received a total of 155 Paper and 8 Session submissions, an increase in total submissions from the 2021 cycle, however, still considerably lower from the pre-pandemic cycles. We believe the reduction in submissions was due to the ongoing impact of the pandemic.

Conference Year	Paper Submissions	Session Submissions	Total
2022	155	8	163
2021	131	13	144
2020	207	25	232
2019	173	17	190
2018	202	14	216
2017	152	8	160
2016	183	11	194
2015	140	23	163
2014	152	16	168
2013	156	12	168
2012	150	At least 2	≥152

Disqualified Submissions (n=8)

We screened all of the submissions prior to assigning reviewers to ensure that they were related in some way to our broad early childhood focus, were blinded, complete, and met the 2,000 word limit (or roughly 5 single-spaced pages or 7 double-spaced pages). We disqualified 3 paper submissions that exceeded the word limit; 2 paper submissions did not include an uploaded paper file; 2 paper submissions were missing too much information to be sent out for review; and 1 session submission did not meet the requirements of a structured session. We emailed these presenters to explain why their respective proposals were being disqualified.

(2022 Proposal Submissions Summary Continued.)

Reviewed Submissions (n=155)

We assigned 3 topic-relevant reviewers to each of the remaining Paper submissions and Session submissions. All the reviewers were alerted about their assignments via bulk email on August 9, 2021. (Note: AERA moved 3 submissions with SIG board member authors from our review platform into an AERA “Conflict of Interest” pool. AERA leadership managed the reviews and made decisions about whether to accept or reject those proposals. We have included these 3 submissions in our report along with the rest of the submissions.)

Conference Program Process

Based on the number of submissions received by each Division and SIG in relationship to the total number of submissions received, each unit is allocated a certain number of paper/symposia sessions proportionally. Additionally, each unit receives an additional allocation for paper presentations which can be used for roundtable or poster sessions. The table below shows our SIG’s 2022 allocation of paper/symposia sessions and individual paper presentations in roundtable or poster format over time. For the 2022 cycle, the SIG was allocated 2 fewer paper/symposia sessions and 15 fewer individual papers for roundtable/poster.

Conference Year	Paper/Symposia Allocation	Papers in Roundtable or Poster Allocation
2022	15	49
2021	17	64
2020	18	93

Based on the 2022 allocation, we divided the allocated 15 paper/symposia into 10 paper sessions (with 5 papers each) and 5 symposia. The 49 individual papers for roundtable/poster format were grouped in 6 roundtables and two poster sessions.

To determine whether to accept or reject a reviewed submission, we considered its overall average score and normalized scores (with the latter created by AERA to take into account inter-rater differences in scoring), as well as the reviewers’ comments and their accept/reject recommendations. In the case of widely varying reviewer scores or comments, we carefully read the submission ourselves and, in some cases, “overruled” the outlier reviewer. Our goal throughout the process was to develop a strong program that would reflect important topics in the field and be of interest to SIG members. The process of assigning accepted submission as a paper, roundtable, or poster, we considered review scores and the extent to which each could be grouped by topic/theme

Our final program contains:

- 99 paper/poster proposals, for a 64% acceptance rate. These papers were presented as follows:
 - 10 paper sessions (n=50)
 - 6 roundtables (n= 30)
 - 2 poster sessions (n= 19)
- 5 symposia, for an acceptance rate of 50%

We would like to thank everyone who submitted a proposal to the SIG, and those of you who served as our volunteer reviewers.



2022 Budget and Membership Report

Jennifer Baumgartner

MEMBERSHIP

Membership Categories	April 2017 (San Antonio)	April 2018 (New York)	April 2019 (Toronto)	2020 (No Conference)	2021 (Virtual)	2022 (San Diego)
Current	408	413	378	413	373	342
New	87	89	86	93	92	68
Lapsed/still in AERA ⁺	76	58	74	109	93	86

+The “Lapsed/Still in AERA” row reflects people who have an active AERA membership but are no longer part of our SIG.

BUDGET

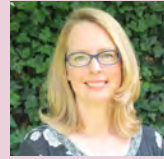
Category	Description	2021	2020	2019	2018
Starting balance (January)		\$14,013.79	\$10,016.52	\$7,713.92	\$9,785.73
Income	Membership dues	\$6,030.00	\$5,760.00	\$7,290.00	\$6,780.00
	Sponsorships	\$0.00			
	Reimbursements	\$1,630.00	\$0.00	\$400.00	\$0.00
TOTAL INCOME		\$7,660.00	\$5,760.00	\$7,690.00	\$6,780.00
Expenses	Awards	(\$1,500.00)	(\$1,000.00)	(\$2,000.00)	(\$2,500.00)
	Plaques/Certificates (+shipping)	(\$119.90)	(\$171.24)	(\$135.00)	(\$135.00)
	COVID Emergency Travel Awards	(\$1,630.00)			
	Conference reception			(\$2,441.00)	(\$4,988.36)
	Board meeting			(\$511.40)	(\$928.45)
	Meeting expenses				
	Webinar honorarium	(\$500.00)			
	AERA Management Fee	(\$300.00)	(\$300.00)	(\$300.00)	(\$300.00)
	Web hosting/management		(\$291.49)		
	TOTAL EXPENSES		(\$4,049.90)	(\$1,762.73)	(\$5,387.40)
Ending balance (December)		\$17,623.89	\$14,013.79	\$10,016.52	\$7,713.92

EE/CD EXECUTIVE COMMITTEE AND COMMITTEE CHAIRS 2021-2022

ELECTED MEMBERS



Myae Han
Chair
(2020-2022)
Professor,
University of Delaware



Melissa Sherfinski
Chair Elect
(2020-2022)
Associate Professor,
West Virginia University



Marty Lash
Past Chair
(2020-2022)
Professor,
Kent State University



Jennifer Baumgartner
Secretary / Treasurer
(2020-2022)
Associate Professor,
Louisiana State University



Tomoko Wakabayashi
Senior Member-at-Large
(2020-2022)
Associate Professor,
Oakland University



X. Christine Wang
Senior Member-at-Large
(2021-2023)
Website Manager
Professor, SUNY Buffalo



Alison Hooper
Junior Member-at-Large
(2020-2022)
Assistant Professor,
University of Alabama

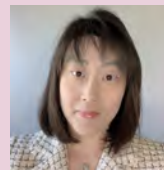


Bethany Wilinski
Junior Member-at-Large
(2021-2023)
Assistant Professor,
Michigan State University



Mila Costa
Graduate Student Representative

Indiana University



Sohyun Meacham
Newsletter Editor
(2020-2023)
Associate Professor,
University of Northern Iowa

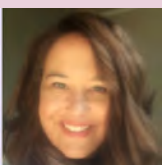
APPOINTED MEMBERS



Kate Delaney
Program Co-Chair
(2020-2023)
Associate Professor,
University of Toledo



Sophia Han
Program Co-Chair
(2021-2024)
Associate Professor,
University of South Florida



Kate McCormick
Program Co-Chair
(2019-2022)
Assistant Professor,
SUNY at Cortland



Amber Brown
Communications Officer
(2021-2022)
Associate Professor,
University of Houston-Clear Lake